



CG G60
305-325W

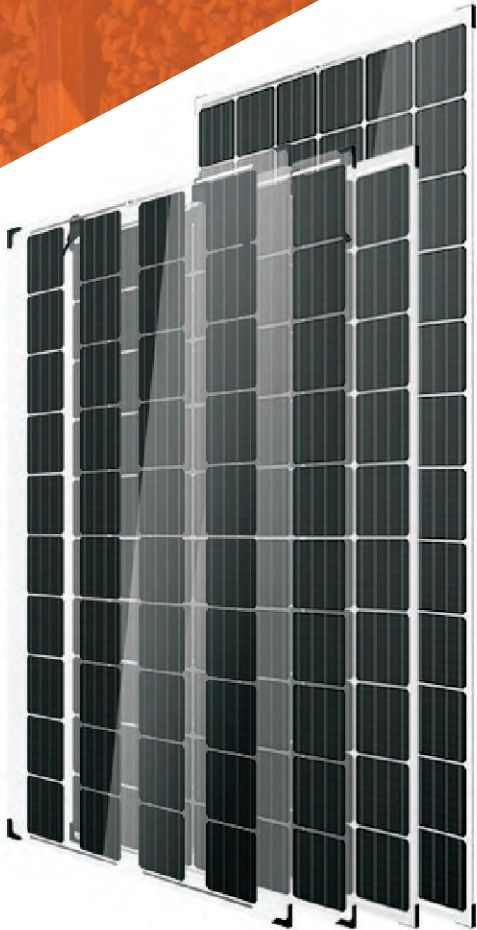
CG G72
365-385W

GLASS-GLASS SOLAR MODULES
NEXT GEN SOLAR MODULES
WITH GLASS BACK DESIGN

60 / 72 Cells

 **CONTENDRE**
YIELD SECURITY

- ANTI PID TECHNOLOGY (APT)
- HOT-SPOT PROTECT (HSP)
- TRACEABLE QUALITY (TRA.Q)
- ANTILID TECHNOLOGY (ALT)



- 

5 BUSBAR SOLAR CELL
Advanced 5 busbar Cell technology for higher efficiency and better aesthetics
- 

LOW MAINTENANCE
Reduced soiling and snow coverage requires less maintenance and enhances fire safety
- 

IMPROVED DURABILITY
Dual glass reduces micro-cracking, snail trails, corrosion caused by moisture, salt mist, acid, alkali, sand, etc.
- 

ALL-WEATHER TECHNOLOGY
Optimal yields, whatever the weather with excellent low-light and temperature behavior
- 


AESTHETICALLY PLEASING DESIGN
Frame less design, Light permeability and it's transperance makes it aesthetically soothing.
- 


ENDURING HIGH PERFORMANCE
Long-term yield security with Anti LID and Anti PID Technology, Hot-Spot Protect and Traceable Quality
- 

HIGHER LIFETIME POWER YIELD
Superior Linear Power output warranty of 30 years with lower rate of degradation than standard modules

Contendre (CGPL) is one of the world's leading solar solution experts. We are specialised in high efficiency solar module manufacturing, distribution and research. To utilise our production and technology advantage, we provide our customers with comprehensive solutions for the whole life cycle of solar project.

THE IDEAL SOLUTION FOR:

 Building integrated solar solution

 Ground-mounted, floating solar power plants

We use Raw Materials certified by:







IEC, BIS, MNRE certifications for Solar Modules under process.

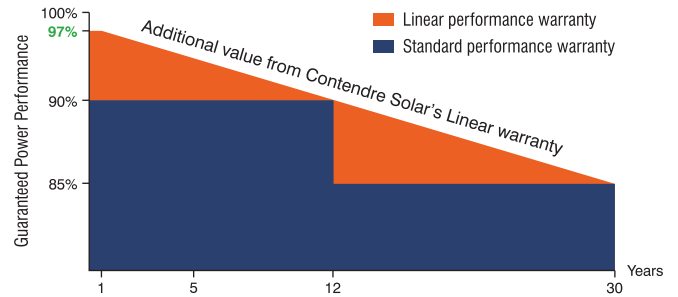
Note: Specifications subject to technical changes and tests. Contendre reserves the right of final interpretation.



MECHANICAL SPECIFICATION

Mono Perc Cell	6 x 10 (60)	6 x 12 (72)
Format	1645 x 985 x 40 mm	1968 x 990 x 40 mm
Weight	24 kg	28 kg
Front Cover	3.2 mm tempered glass with anti reflection technology	
Back Cover	Low Iron ARC Tempered Glass	
Frame	Frameless Design	
Junction Box	IP 67 / IP 68 rated Split Junction Box	
Cable	1000mm/1200mm Long, 4mm ² cables	
Connector	MC4 compatible connectors	

PERFORMANCE WARRANTY



ELECTRICAL PARAMETERS

G-SERIES	60 Cells						72 Cells				
	305	310	315	320	325	365	370	375	380	385	
MINIMUM PERFORMANCE AT STANDARD TEST CONDITIONS, STC (POWER TOLERANCE +5W/-0W)											
Power at MPP	P_{VPP} [W]	305	310	315	320	325	365	370	375	380	385
Short Circuit Current	I_{SC} [A]	9.94	10.01	10.06	10.10	10.13	9.94	10.01	10.06	10.10	10.13
Open Circuit Voltage	V_{OC} [V]	39.60	40.38	40.56	40.72	40.86	47.52	48.46	48.67	48.86	49.03
Current at MPP	I_{MPP} [A]	9.50	9.60	9.70	9.79	9.85	9.50	9.60	9.70	9.79	9.85
Voltage at MPP	V_{VPP} [V]	33.41	33.56	33.65	33.83	33.93	40.09	40.28	40.38	40.60	40.71
Efficiency	η [%]	18.82	19.13	19.44	19.75	20.06	18.83	19.09	19.35	19.60	19.86
Fill Factor		79.64	79.71	79.99	80.53	80.74	79.64	79.71	79.99	80.53	80.74

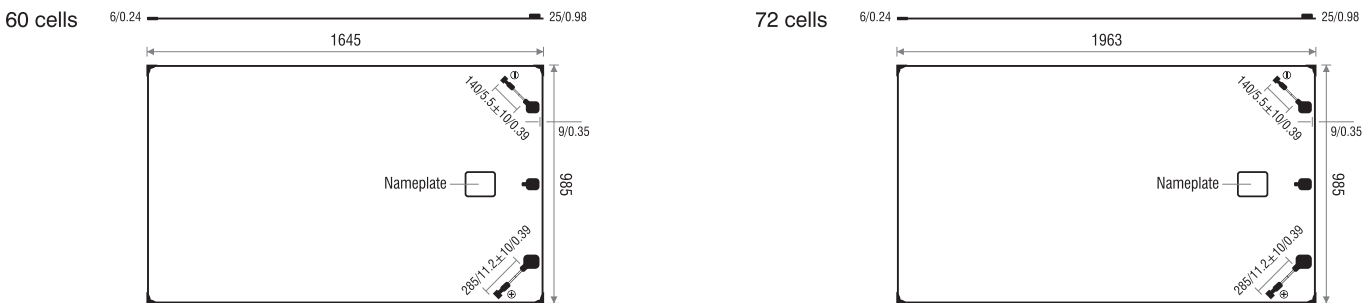
Electrical values measured at STC: 25 °C, 1.5AM, 1000 W/m²

MINIMUM PERFORMANCE AT NORMAL OPERATING CONDITIONS, NOCT

Power at MPP	P_{VPP} [W]	239.28	243.52	247.27	251.50	254.15	292.14	297.29	301.85	306.98	310.20
Short Circuit Current	I_{SC} [A]	8.31	8.38	8.43	8.47	8.50	8.31	8.38	8.43	8.47	8.50
Open Circuit Voltage	V_{OC} [V]	36.36	37.14	37.32	37.48	37.62	44.28	45.22	45.43	45.62	45.79
Current at MPP	I_{MPP} [A]	7.91	8.01	8.11	8.20	8.26	7.91	8.01	8.11	8.20	8.26
Voltage at MPP	V_{VPP} [V]	30.25	30.40	30.49	30.67	30.77	36.93	37.12	37.22	37.44	37.55

Measurement tolerance, AM 1.5G, NOCT (Wp) at 45 ± 2 °C @800 W/m²

CONTENDRE MODULE DIMENSION DIAGRAM



TEMPERATURE COEFFICIENTS

Temperature Coefficient of I_{SC}	a	[%/C]	+0.0544	Temperature Coefficient of V_{OC}	b	[%/C]	-0.311
Temperature Coefficient of P_{MPP}	y	[%/C]	-0.3866	Normal Module Operating Temperature	NMCT	[°C]	45 ± 2 °C

PROPERTIES FOR SYSTEM DESIGN

Maximum System Voltage V_{SYS}	[v]	1500 (IEC)	Safety Class	II
Maximum Series Fuse Rating	[A DC]	20	Fire Rating	C
Max. Design Load, Push / Pull	[lbs / ft ²]	2400 Pa	Temperature Degree Celsius	-40°C up to +85°C
Max. Test Load, Push / Pull	[lbs / ft ²]	5400 Pa		

QUALIFICATION AND CERTIFICATES

UL 1703, CE-compliant.
IEC 61215:2016, IEC 61730:2016, Application Class II



All certifications under process.

PACKAGING DETAILS

	60 Cells	72 Cells
Number of Modules per Pallet	28	25
Number of Pallets per 53' Troller	30	24
Number of Pallets per 40' HC-Container	28	22
1-Pallet Dimensions (L x W x H)	1665 x 1040 x 1190 mm	1980 x 1040 x 1190 mm
1-Pallet Weight	600.00 kg	705.00 kg

Note: Installation instructions must be followed. See the installation and operating manual or contact our technical service department for further information on approved installation and use of this product.

Specifications subject to technical changes. ©CONTENDRE

CONTENDRE GREENERGY PVT. LTD.

102, 1st Floor, Vikas Paradise, LBS Marg, Mulund (West), Mumbai - 400080. India.

TEL: +91-8928731268 EMAIL: info@contendresolar.com WEB: www.contendresolar.com

Made in India

